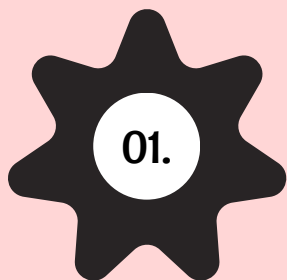


Garden of the Gods School Field Trips ~Before Your Visit~



parks · recreation · cultural services

Page 1



Confirm Your Visit

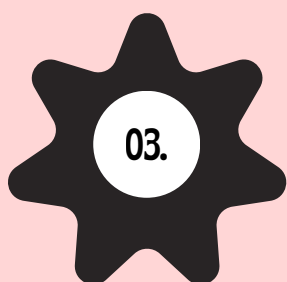
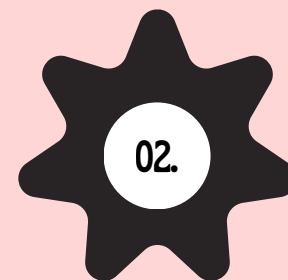
If you have any questions or need to cancel your trip, please reach out to us at GardenOfTheGods@ColoradoSprings.gov

Please also share if your group has any special needs or requirements from our team.



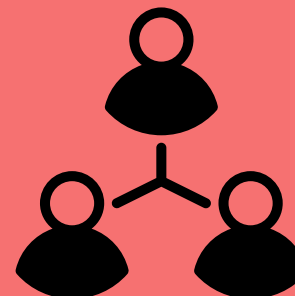
Engage with our Pre-Visit Activities (see page 3)

Please do not assign additional activities for your students to complete during their visit. However, we encourage you to use our pre-visit activities to build excitement!



Divide Your Students

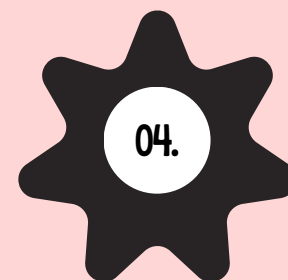
Prior to your visit, the School Programs Coordinator will reach out to let you know how many groups to divide your students into. Please have your students grouped prior to your arrival. Color-coded name tags work great!



Share Expectations with Chaperones

Please share page 4 with your chaperones (including both teachers and parents) and read the Chaperone Policy Document. Chaperone policies should be communicated to all chaperones prior to arrival.

Schools are required to bring at least one chaperone per student group.



~When You Arrive~

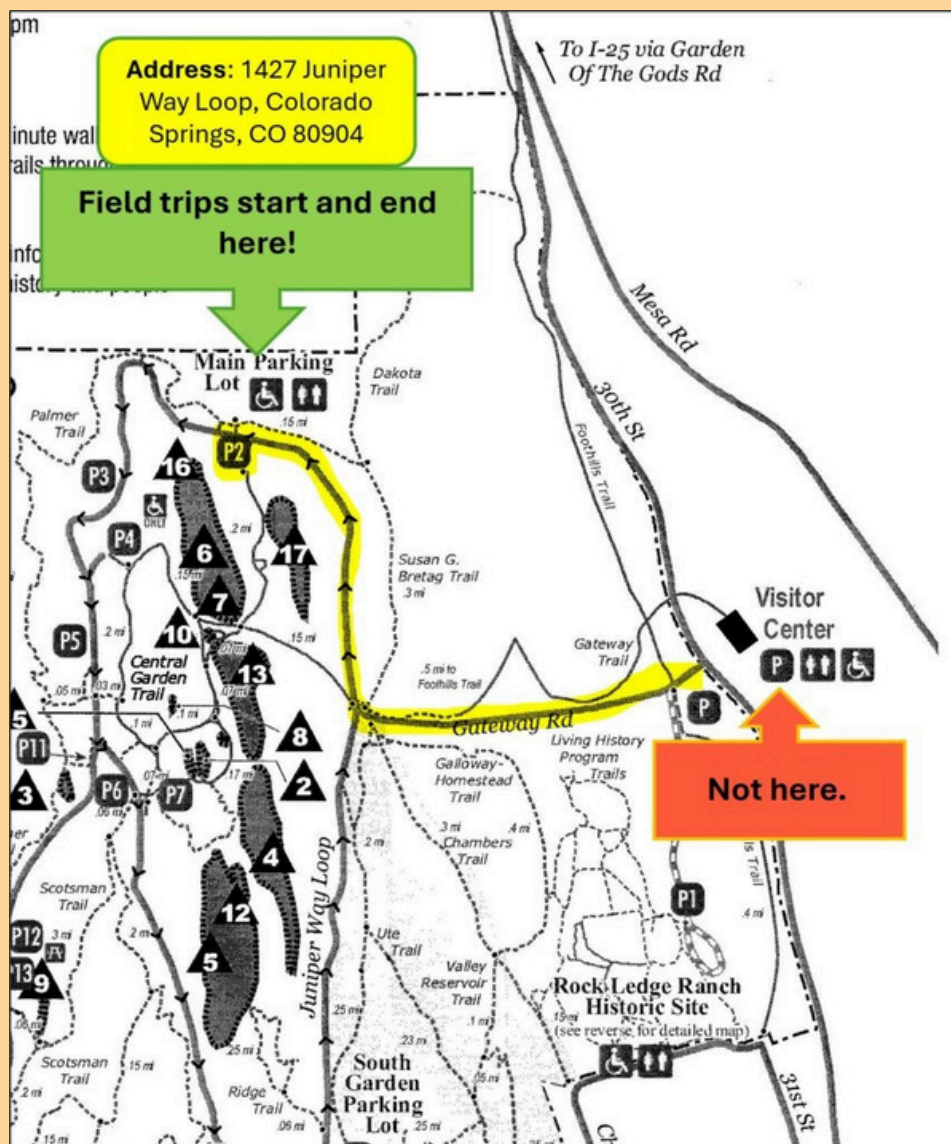
Page 2



parks · recreation · cultural services

Please make sure you arrive at the correct place!

- Your field trip will **not** stop at the Visitor and Nature Center. Instead, we will meet at Parking Lot #2 and spend the entire adventure hiking in the park!
- Please ensure your bus driver pulls into the **FIRST** left into the parking lot.
- There is bus parking on both the east and west sides of the parking lot. Please use the east side if open (near the overlook, at the entrance)



~When You Arrive~

Page 3



parks · recreation · cultural services

01.

Please Stay on the Bus!

One of our staff members will meet you on the bus for a brief introduction for the kids and discussion with the adults!



Let us know if you would like to end early or plan to have a picnic lunch

This allows us to provide the information to all of our group leaders and ensures a smooth transition at the end of your visit.

02.

03.

Have Students Use the Restroom

Our staff will direct you to the restroom facilities as you exit the bus. Please give all students the opportunity to use the facilities. A mid-hike bathroom break can end the adventure for the entire group!



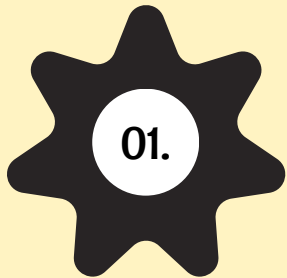
Meet us on the Overlook above the bathrooms

We are so excited to have you with us today! Before we begin, we will give the students an introduction of what to expect.

04.

~Chaperone Expectations~

Page 4



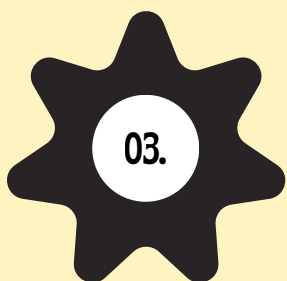
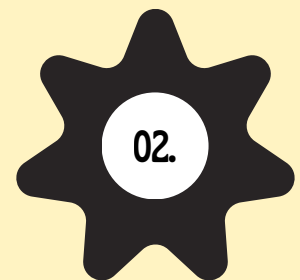
THANK YOU!

This adventure would not be possible without you. We are so grateful for the time you spend helping the students explore and connect with their park!



Help Manage Behavior

During your visit you are responsible for helping to ensure the students pay attention, are respectful, and follow directions from the docent.



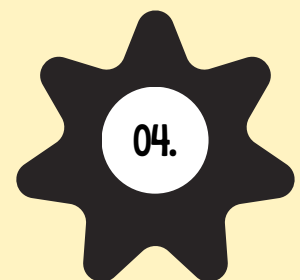
Be Attentive

Please maintain visual supervision of the students in your group at all times. We ask that chaperones limit side conversations and personal calls, as these can be very distracting for the students learning.



Support Student Learning

We hope you learn something during your visit! However, we ask that you allow the students to fully engage in the learning process. Please let them ask and answer all questions and make their own observations!



~Pre-Visit Activities~

Page 5



parks · recreation · cultural services

01.

Pre-Visit Video

Show your students this video to help them prepare for their field trip!
<https://youtu.be/rBHDUky1O8U>



Discussion Questions

As a class, create a brainstorming chart on what the students already know about your field trip topic. What questions do they have about the Park? What do they think they will learn during their visit?

02.

03.

Writing Prompt

How do you think the landscape of the Garden of the Gods has changed over millions of years? What did it look like a million years ago? A thousand years ago? What will it look like in the future?



Field Trip Expectations

In small groups or as a class, ask the students what expectations we may have of them during their visit. What rules will be the same at the Park and at school? What will be different?

04.

~Post- Visit Activities~

Page 6



parks · recreation · cultural services

01.

Tell us What you Learned!

Our volunteers love hearing about the impact they have on the students. Please consider writing a thank you letter or having the students draw what they learned about!



Writing Prompt

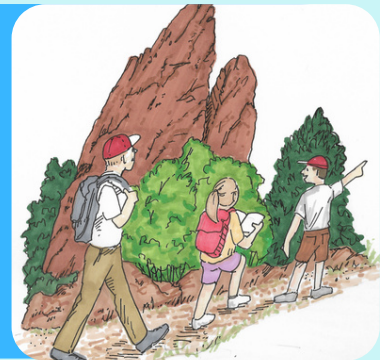
Create a postcard about your visit to the Garden of the Gods. Write a short message to a friend or family member about what you learned.

02.

03.

Bring out your Inner Artist!

Draw your favorite rock formation or animal from the visit. What is special about your rock formation? How does your animal survive in their ecosystem?



?



Teachers: Please Fill out our Survey!

Please help us improve the experience for future visitors. Consider filling out our brief survey here:

<https://forms.gle/8gtTC8q2Q6PjNBvq7>

04.

~Program Overview~

Page 7



parks · recreation · cultural services

01.

Academic Standards

Our programs align with current Colorado Academic Standards for K-12 Life Science, Earth and Space Science, Earth Systems, and Earth and Human Activity



Geology

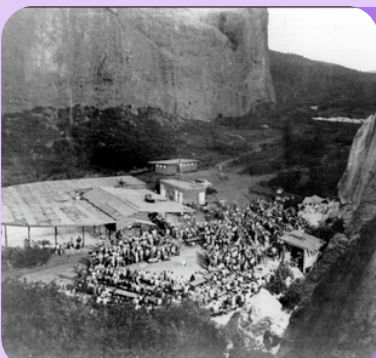
Our geology trips discuss the rock types and major geologic processes. Students have the opportunity to make hands-on observations about the rocks that make up the Garden of the Gods.

02.

03.

Ecology

Our ecology trips discuss the six ecosystems in the Garden of the Gods, as well as the concepts of habitat, ecosystem and predator-prey relationships. Students have the opportunity to examine the way the animals and plants interact with each other.



History

Our history trips discuss the history of human habitation in the Garden of the Gods. We will examine how the Ute American Indians used the land, and the impact the Garden had on European exploration and American expansion.

04.